

Impacts of moving the NW 6A/C Boundary to the USFS Ranger District Boundary

This proposed boundary change will add 42,369 acres to GMU 6C while removing that amount from 6A. 6A acres will decrease by 9% and 6C will increase by 7%. Licenses were adjusted by the percent increase/decrease in land mass according to Rule in the EPLUS spreadsheets. The public/private split for 6A would be 84/16 (currently 86/14) and 6C would be 87/13 (currently 85/15). About 20 ranches currently in 6A will move to 6C and 5 ranches currently in 6C would move to 6A. The tables below provide a detailed summary of the current verses proposed change in license allocation; following are general pro and con statements that apply to this change:

Pros

- Hunters obtaining a **6C** license would now be able to hunt a portion of the wilderness.
- Landowner licenses in **6C** may become more valuable and stay at the higher level **if** the elk population does not change in and around the wilderness.
- About five **6C** landowners would move to **6A** where the values of the permits are higher.
- The proportion of private land in **6A** increases from 14% to 16% and fewer landowners will compete for approximately the same amount of licenses.
- Public hunters in **6C** would see a few more hunting opportunities.

Cons

- The new boundary is NOT enforceable; this unmarked line does not follow any road, river, trail, or ridge. This may lead to unintentional violations of people hunting in the wrong unit.
- About 20 landowners would move from 6A to 6C where permits are less valuable.
- The proportion of private land in 6C decreases from 15% to 13% so landowners will compete for fewer licenses.
- This may lead to decreased elk quality & quantity in and near the wilderness contrary to the desires of most of our public comments and create a similar situation as exists today with the current 6C boundary.
- The Rancho de las Sillas and the Kotlisky Ranches were ‘base properties’ which qualified them for a set amount of permits each year in 6C and will now be ‘Small Contributing Ranches’ in 6C where they depend on the luck of the draw for their annual permits.
- Public hunters in **6A** would see fewer hunting opportunities.

Current

Total license allocation

GMU	manage- ment goal	total licenses by bag limit			
		MB	A	ES bow	total lic.
6A	QHM	361	120	300	781
6C	OOM	488	522	341	1351
Totals		849	642	641	2132

With Boundary Change

Total license allocation

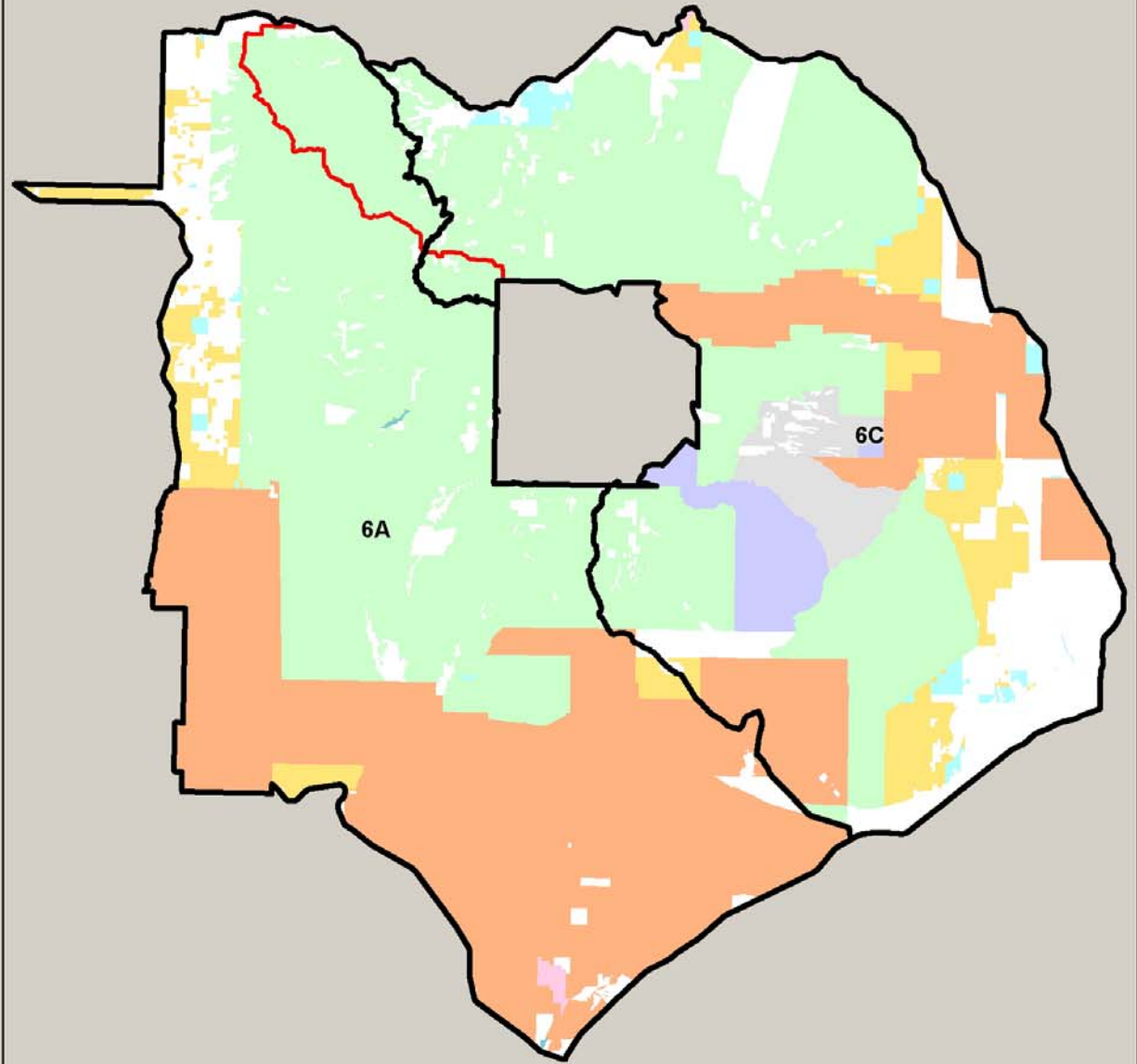
GMU	manage- ment goal	total licenses by bag limit			
		MB	A	ES bow	total lic.
6A	QHM	329	109	273	711
6C	OOM	522	559	365	1446
Totals		851	668	638	2157

Private license allocation

open GMUs or areas	2009 - 2010 hunt season			
	bull	antler- less	ES bow only	total
6A	51	17	42	110
6C	73	78	51	202
Total	124	95	93	312

Private license allocation

open GMUs or areas	2009 - 2010 hunt season			
	bull	antlerless	ES bow only	total
6A	52	17	44	113
6C	68	73	48	189
Total	120	90	92	302



GMU 6A and 6C COER Proposed Boundary Change - July 2009